

Building and Growing Your Own Professional Learning Network



School Net South Africa ICT Conference

Thanks to my PLN's!

- * Twitter
- * Facebook
- * Intel Engage
- * Educator's
PLN Ning



How do social networks make up personal/professional learning networks?



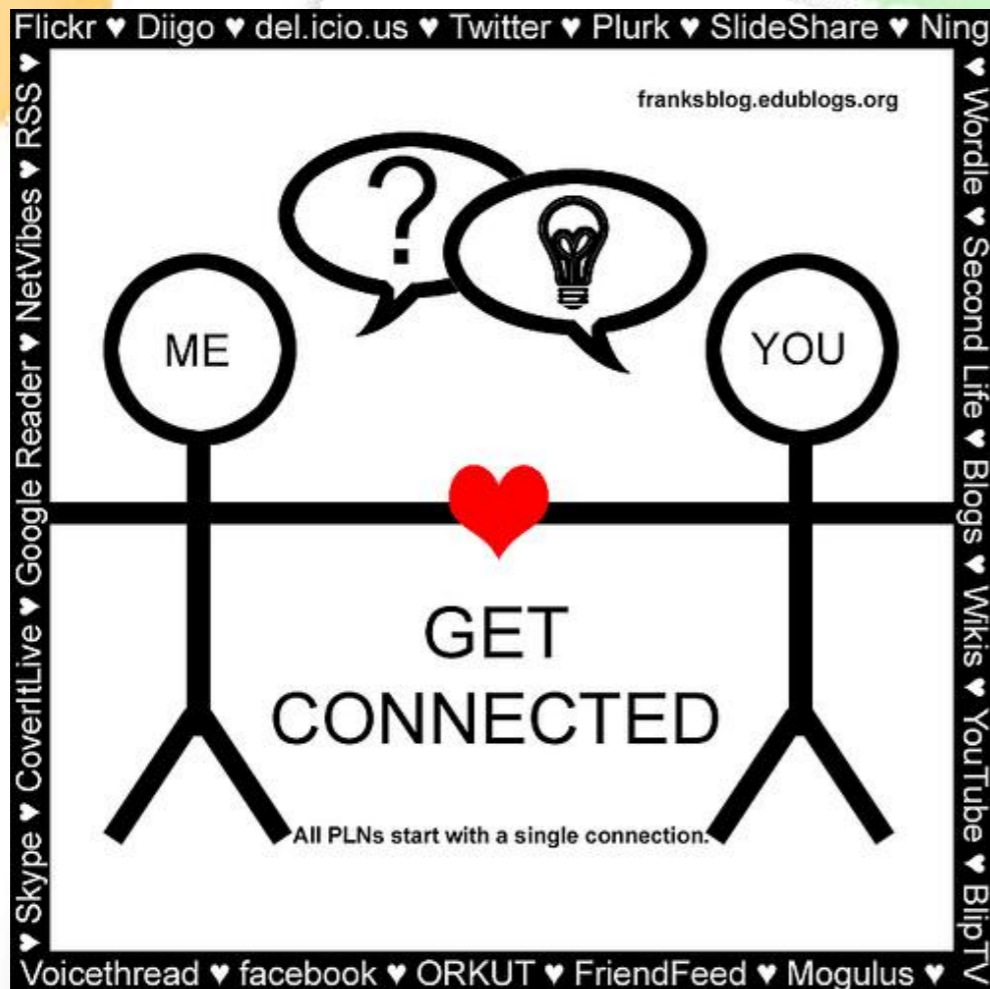
<http://weblogg-ed.com>

PLN's can be.....



- *Families, friends, colleagues and acquaintances
- *Reference books and textbooks we refer to in the past or present
- *The television and radio stations we tune into on a regular basis

PLN's can also be....



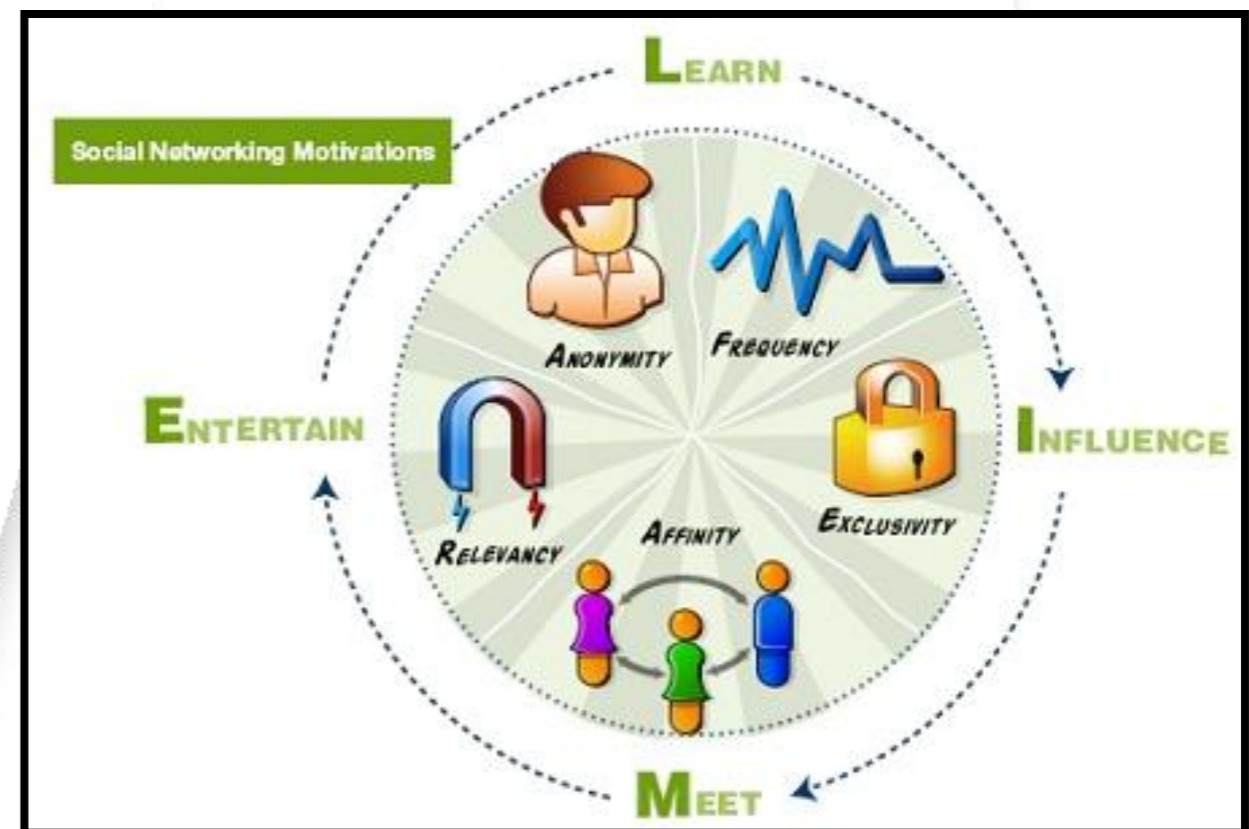
- *Professional and personal periodicals we subscribe to
- *Connecting with people and information through the digital realm

Collective Intelligence

*Shared voice of knowledge & collaborative expertise

*Interests & themes

*Common goal to assist & empower the community

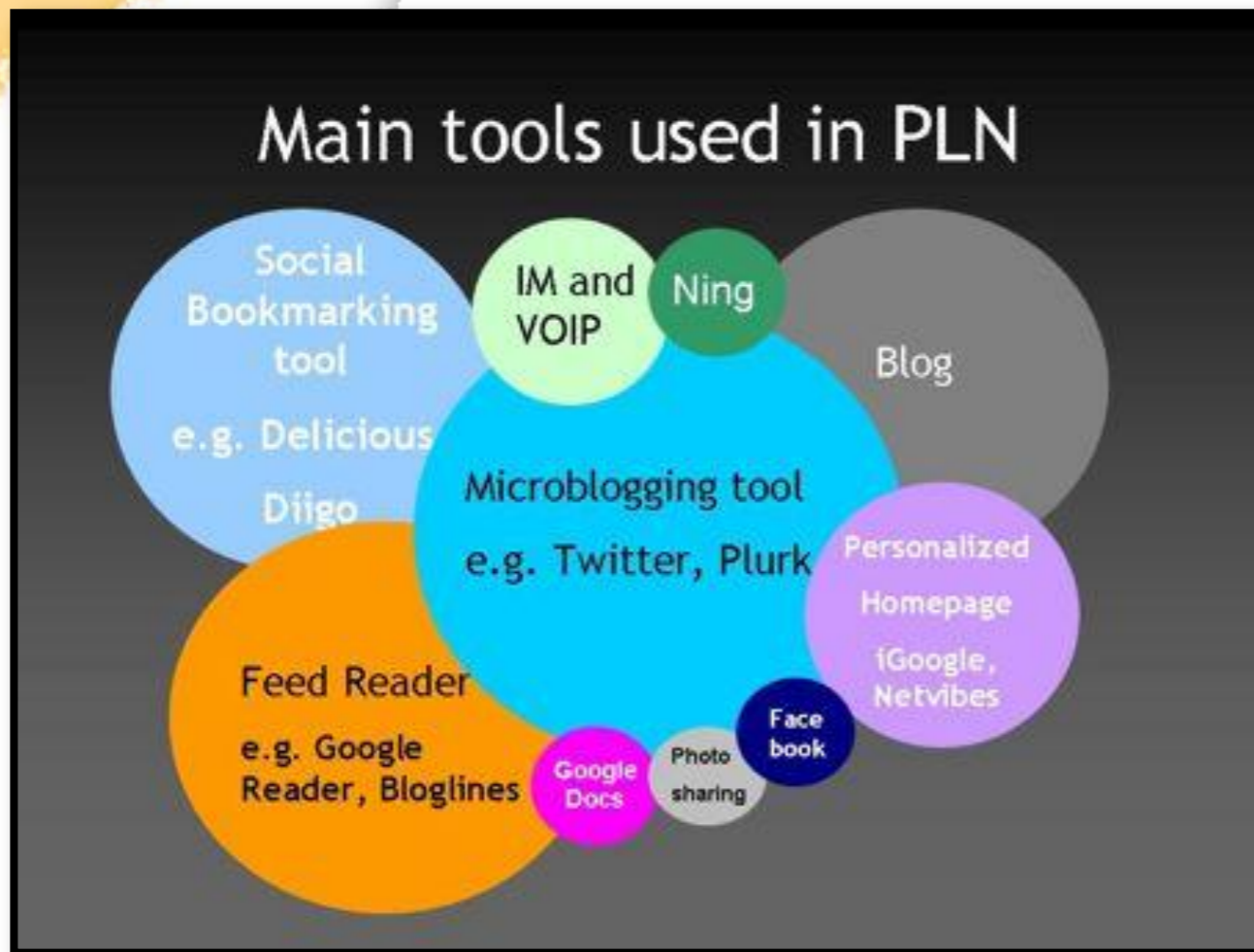


Continuous Share Session

- *Tried & true best practices
- *Lesson plan/thematic unit development
- *Current events and technology trends
- *New opportunities with new expertise
- *Finding answers and solutions



Three types of Known PLN's



*Personally maintained synchronous connections.

*Personally and socially maintained semi-synchronous connections.

*Dynamically maintained asynchronous

Personally maintained synchronous connections

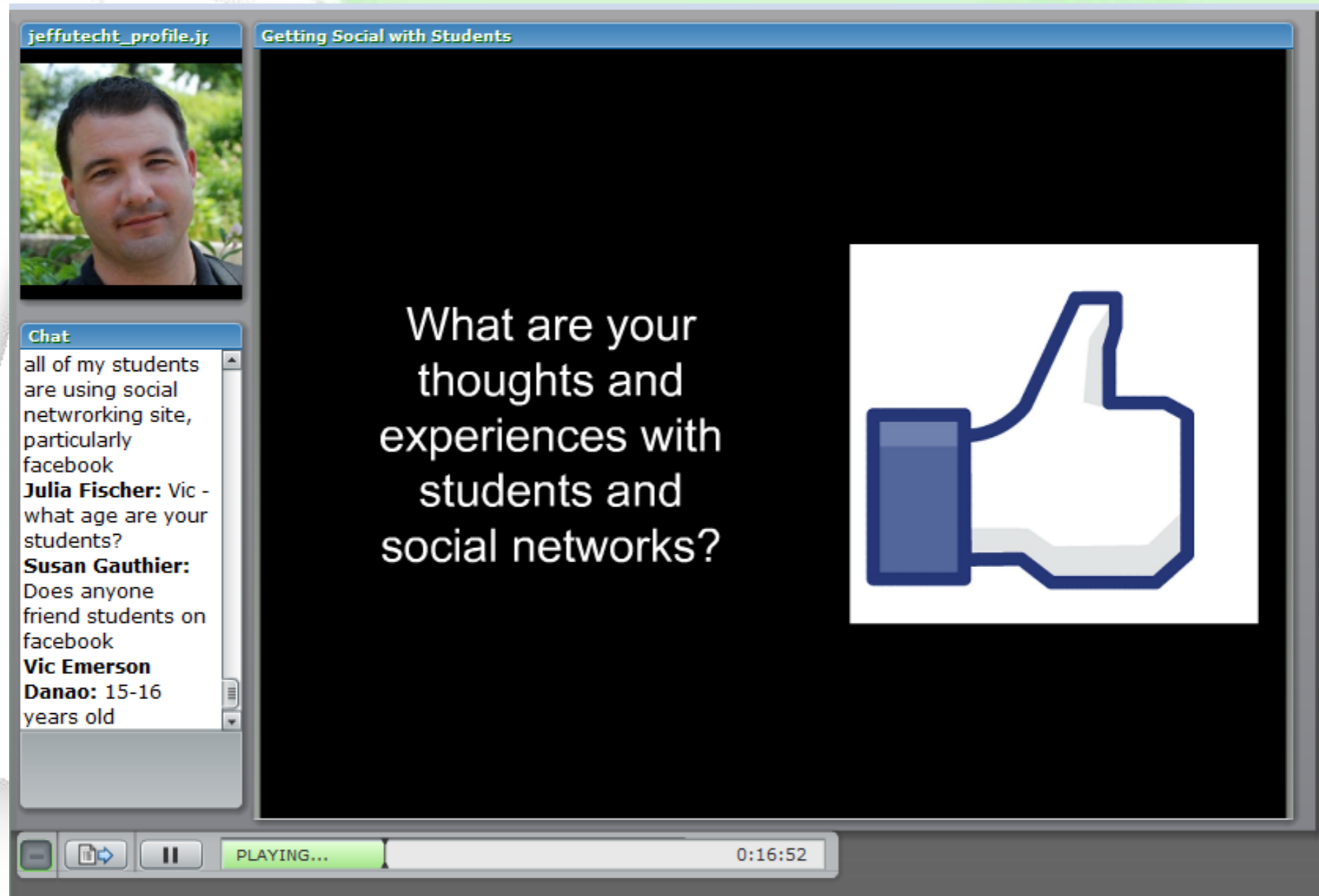
*Traditional method of networking: go to for answers, questions, solve problems, and accomplish goals.

*PLN of tools to enhance above method: chat, instant messaging and text messaging, teleconferencing (Skype or Livestream), or Twitter



<http://www.livestream.com/inteleducation>

Adobe Connect




The screenshot shows an Adobe Connect window with the following elements:

- Header:** jeffutecht_profile.jp | Getting Social with Students
- Video Feed:** A small video window showing a man's face.
- Chat Window:**

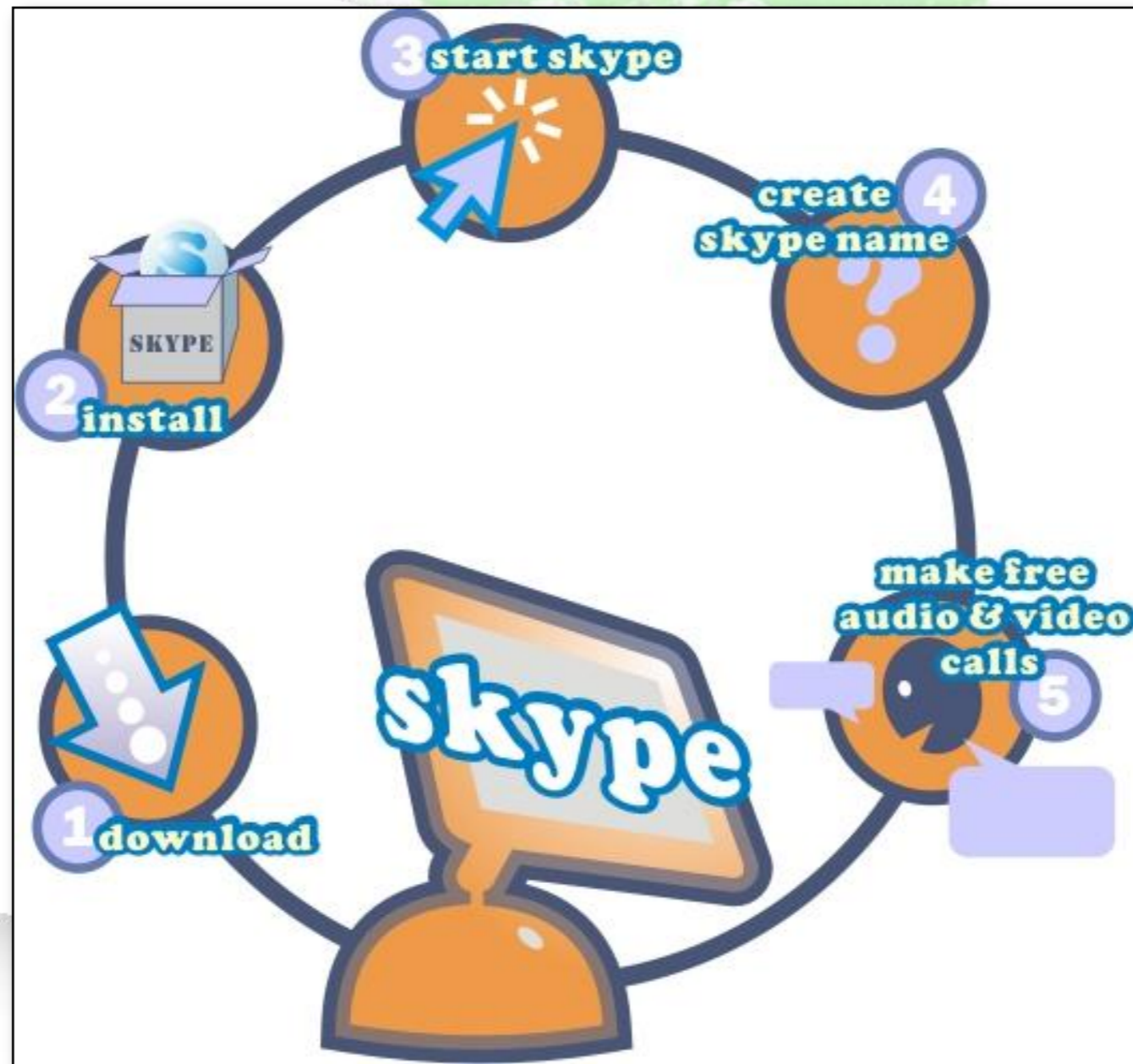
all of my students are using social networking site, particularly facebook
Julia Fischer: Vic - what age are your students?
Susan Gauthier: Does anyone friend students on facebook
Vic Emerson
Danao: 15-16 years old
- Main Content Area:**

What are your thoughts and experiences with students and social networks?


- Player Controls:** Includes a play/pause button, a progress bar labeled 'PLAYING...', and a timer showing '0:16:52'.

<http://goo.gl/NBtN9>

SKYPE



<http://www.skype.com>

TWITTER



<http://www.commoncraft.com>

TWITTER Challenge



<http://twitter.com>

*Twitter For Teachers

*Twitter Tools

*Twitter Challenge

*Tweet Deck or Twirl

Replicated PLN Study



Forms/Doc

Times are a changing.



*Information communication technologies (ICT)

*Repositories of open source applications

*Freed content from print to an electronic means

<http://www.go2web20.net>

Times are a changing.

*Giving voice to ideas to the people

*Reshaping of information experiences to meet our needs



Blogs, Wikis, and Nings - Oh My

*A place to create your own social network & join and participate in other networks.

*Upload and share digital content made public and or private to your community members.

*Threaded discussion forums, applications, and blogs
Host online events, webinars and trainings.



Importance of PLN's



- *Harnessing new technologies to create and grow your own PLN's.
- *Imperative for educators to stay connected.
- *Introducing a changing world to our students.

Personally & socially maintained semi-synchronous connections



Personally & socially maintained semi-synchronous connections

- *Semi-synchronous refers to the idea that collaboration doesn't have to happen in real time.
- *Conversations that are not exactly conversations.
- *Questions directed toward a single friend, or a community of people, based on interests and expertise, are in a position to help you do your job.

Personally & socially maintained semi-synchronous connections

The screenshot shows the Intel Engage website interface. At the top left is the Intel logo and the text "Intel® Engage" with the tagline "A global community for educators dedicated to transforming K-12 classrooms". To the right are buttons for "Intel Education" and "Teaching Tools". Below this is a user navigation bar for "Naomi Harm" with options for "New", "Your Stuff", "History", and "Browse", along with a search bar. A secondary navigation bar includes "Intel Engage" and a "SHARE" button. The main content area features a "Welcome!" message and a grid of buttons for "Webinars and Events", "Transforming Learning with One to One", "Intel® Teach Program Community", "Teachers Engage" (highlighted in orange), "Comunidad en Línea de Docentes", "WorldSkills", and "Intel® Educator Academy". On the right side, there is a "June 2011 Webinars" section listing three events: "Using the Community to Support a Training" on June 6, "Intel® Teach Elements: Collaboration in the Digital Classroom" on June 9, and "Teachers Engage Community Overview" on June 14.

<http://engage.intel.com>

Twitter PLN Community

BACKGROUND GENERATED AT Wishafriend.com

Naomi Harm
National Intel Senior Trainer
Innovative Educator Consulting
innovativeeducator@gmail.com

twitter [#SchoolNetSA11](#) Home Profile Messages Who To Follow nharm

← Back to Home Save this search

Results for #SchoolNetSA11

Tweets · Top ▾

- iEARNUSA** iEARN-USA
@nharm: Look forward to your **#SchoolNetSA11** keynote pres...
<http://bit.ly/mFJq9r> #iEARN #SouthAfrica #edtech
25 Jun
- maggiev** Maggie Verster
@nharm Have just booked for your session at **#schoolnetsa11** in JHB. Cant wait :-)
23 Jun
- Schoolnetsa11** Schoolnet Conference
RT @iSchoolAfrica: It's going to be an excellent conference, with loads to learn. We will also be presenting on the 5th **#schoolnetsa11**
22 Jun
- Schoolnetsa11** Schoolnet Conference
RT @coraliethompson: @maggiev I can't wait,dilemma which to choose when we have to. I want to listen to all. **#schoolnetsa11**
21 Jun
- maggiev** Maggie Verster
Brilliant! See you there! @marlenesouthafr and @iSchoolAfrica will be at **#schoolnetsa11**

People results for **#SchoolNetSA11** · view all

- Schoolnetsa11** Schoolnet Conference
ICT in the Classroom Conference 2011
- maggiev** Maggie Verster
ICT/social media 4 learning & Teaching activist + Mat...
- nharm** Naomi Harm
National Intel Senior Trainer, Keynote Speaker & MS...

Trends · United States · change

- #ineedto stop
- #youcantdateme
- #ripnickiminaj
- Tino Martinez
- Sparky Anderson
- Davey Johnson
- David Cone
- Kevin Hart
- White Chicks
- Waffle House

About Help Blog Mobile Status Jobs Terms Privacy Shortcuts Advertisers Businesses Media Developers Resources © 2011 Twitter

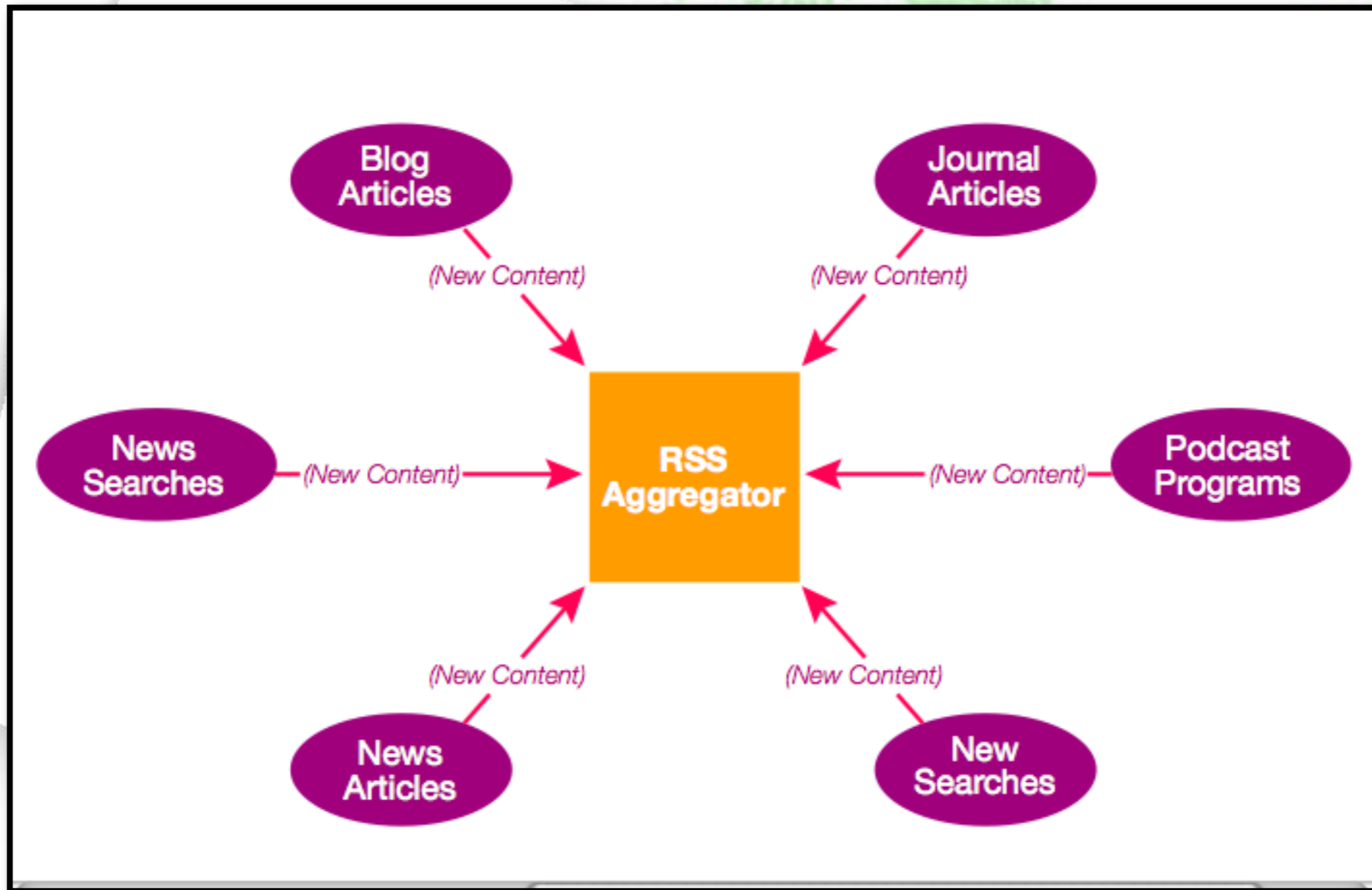
Twitter: nharm

ESSENTIAL Tool ~ RSS

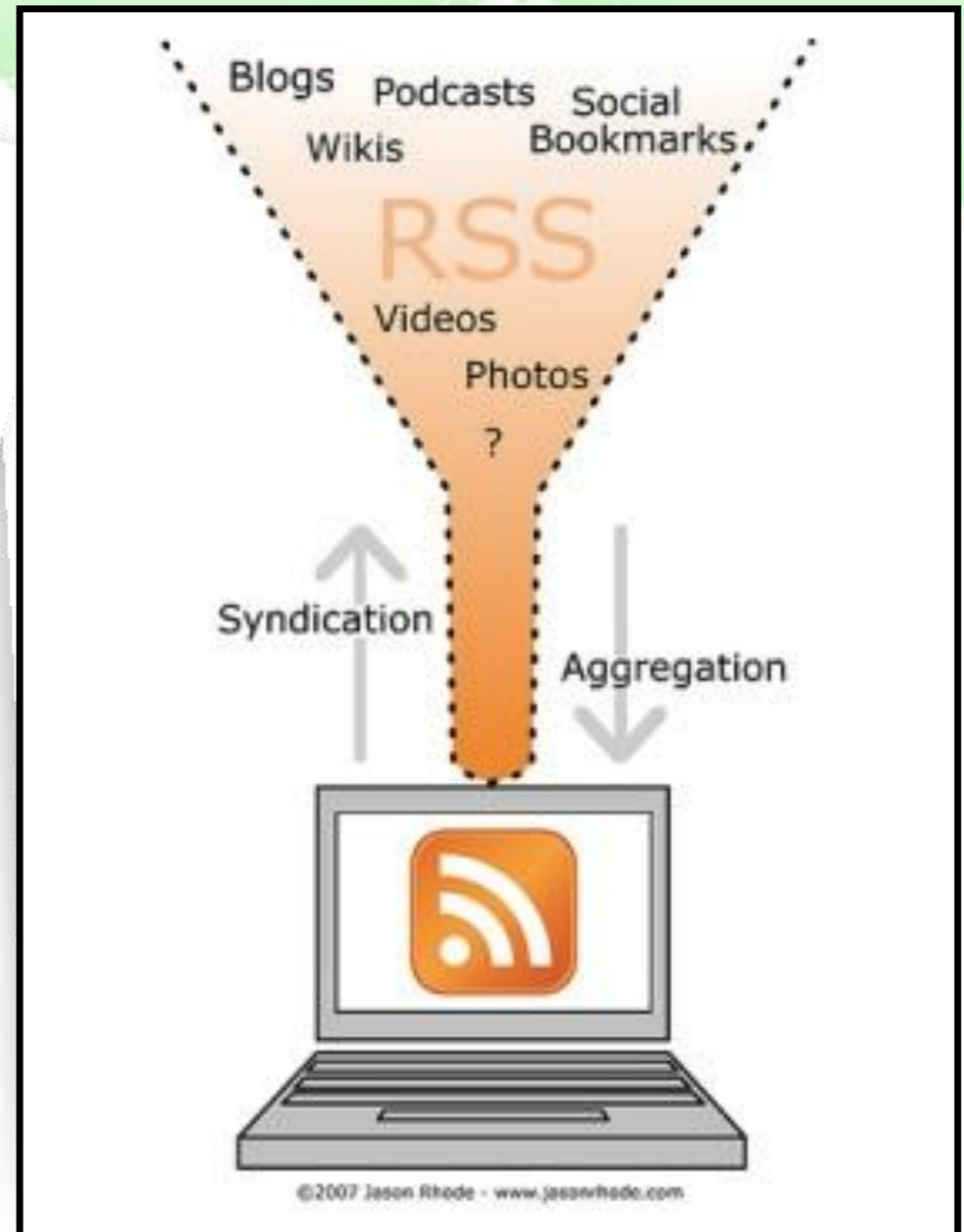


<http://www.commoncraft.com>

RSS- AGGREGATOR



RSS Readers

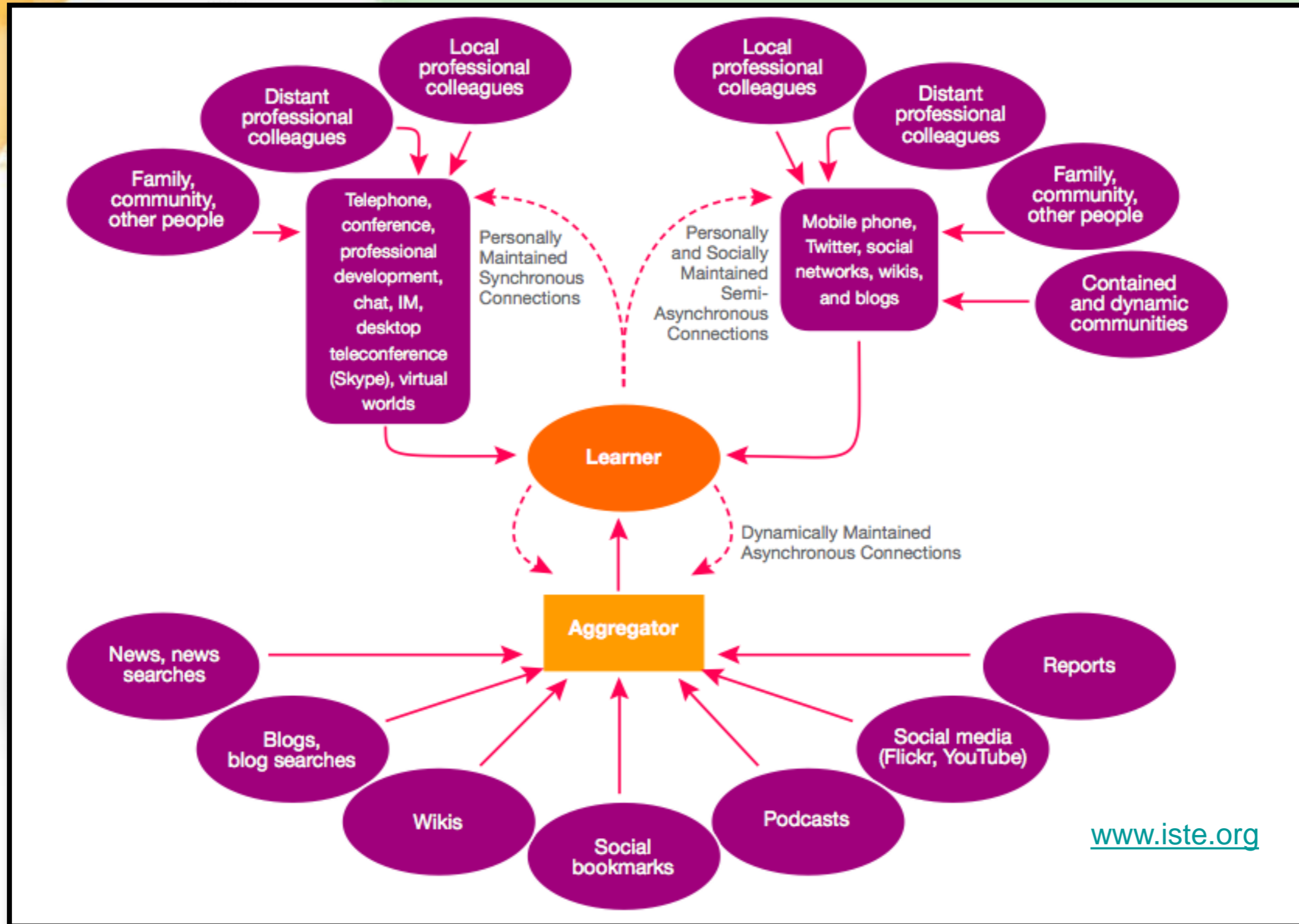


Social Bookmarking



<http://trunk.ly/nharm>

Big Picture Overview



www.iste.org

www.iste.org

Cultivate Your PLN!



To flourish & sustain:

- *Communication
- *Collaboration
- *Global Literacy
- *Authentic & Self - Directed Learning
- *And to....Cultivate Professional & Personal Life Long Learning.

What is your favorite PLN tool now?



Contact Information



Naomi Harm

Innovative Educator Consulting
National Intel Senior Trainer
Keynote Presenter

Email: innovativeeducator@gmail.com
Blog: <http://blog.innovativeeducator.us>
Skype: InnovativeEducator
Twitter: nharm
BoxNet: <http://box.net/naomiharm>
Trunkly: <http://trunk.ly/nharm>