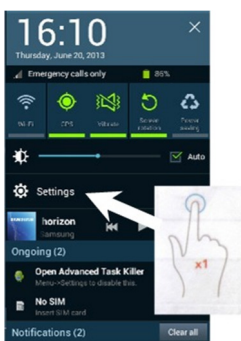
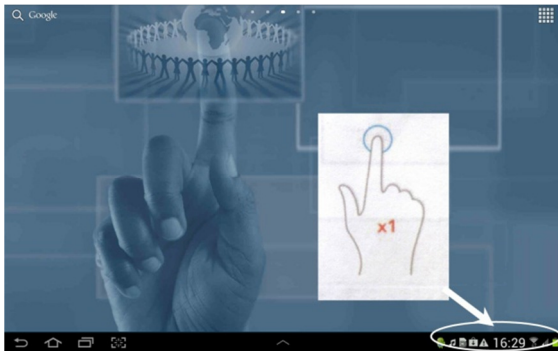
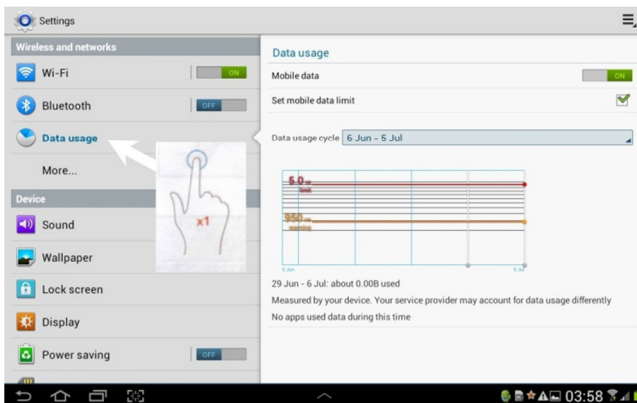


# How to change data usage limits

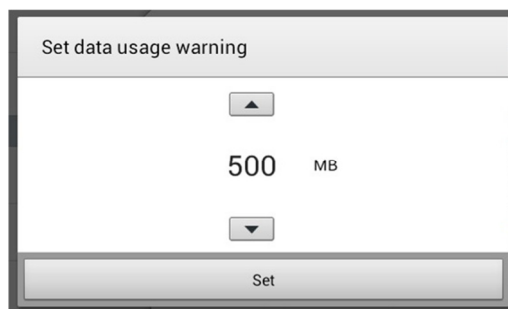
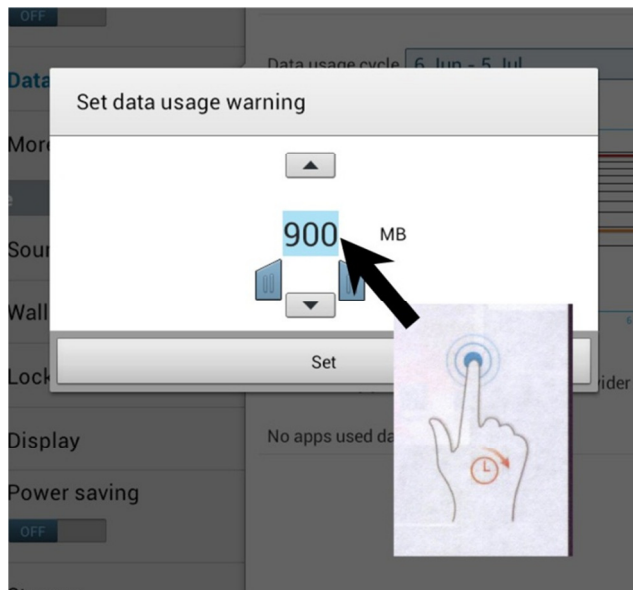
1. Touch and open the settings menu



2. Touch on Data Usage
3. Touch on the orange warning line.



- a. Touch and hold on the number that appears. Once the brackets appear below the number you can type in the value of the warning limit that you wish to set.



4. Touch on **Set**.



Creative Commons, Attribution, Non-Commercial, Share Alike (South Africa)

ICT4RED (<http://ict4red.blogspot.com>)

Tutorial creator: Maggie Verster